

Pacific Crest Trail
Subway Cave trailhead

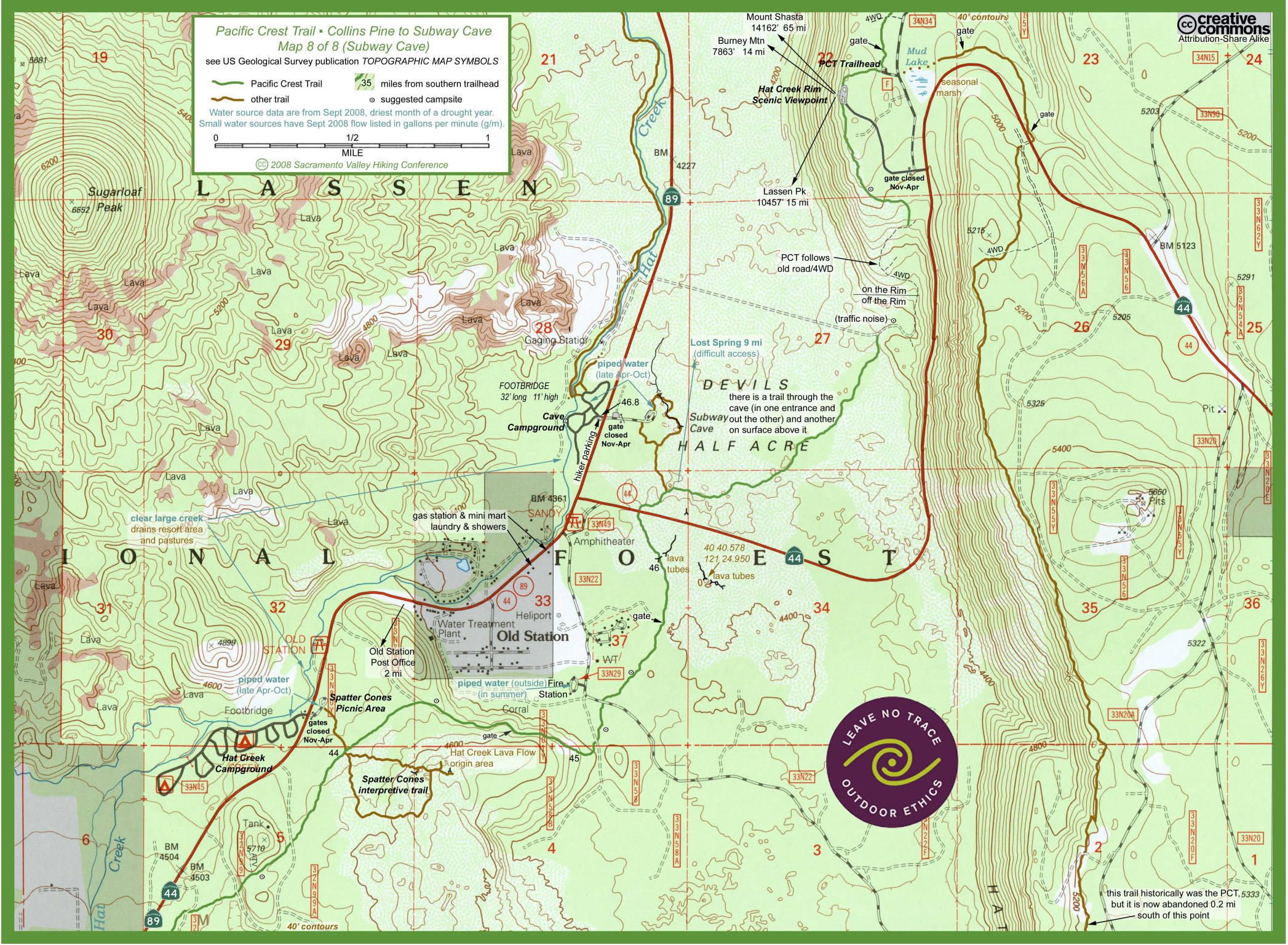
Pacific Crest Trail • Collins Pine to Subway Cave
Map 8 of 8 (Subway Cave)
see US Geological Survey publication **TOPOGRAPHIC MAP SYMBOLS**

Pacific Crest Trail
 other trail
 35 miles from southern trailhead
 suggested campsite

Water source data are from Sept 2008, driest month of a drought year.
Small water sources have Sept 2008 flow listed in gallons per minute (g/m).

0 1/2 1
MILE

© 2008 Sacramento Valley Hiking Conference



Mount Shasta 14162' 65 mi
Burney Mtn 7863' 14 mi
PCT Trailhead
Hat Creek Rim Scenic Viewpoint
Lassen Pk 10457' 15 mi
gate
gate closed Nov-Apr
Mud Lake
seasonal marsh
gate
40' contours
gate
PCT follows old road/4WD
on the Rim off the Rim
(traffic noise)

Lost Spring 9 mi (difficult access)
DEVILS
there is a trail through the cave (in one entrance and Subway out the other) and another on surface above it
HALF ACRE

gas station & mini mart laundry & showers
Amphitheater
Heliport
Old Station
Water Treatment Plant
piped water (outside) Fire (in summer)
Corra
gate
Hat Creek Lava Flow origin area
Spatter Cones interpretive trail
Tank
BM 4504
BM 4503
40' contours



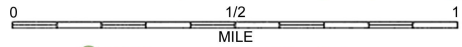
this trail historically was the PCT, 5333 but it is now abandoned 0.2 mi south of this point

Pacific Crest Trail • Collins Pine to Subway Cave
Map 7 of 8 (Hat Creek)

see US Geological Survey publication **TOPOGRAPHIC MAP SYMBOLS**

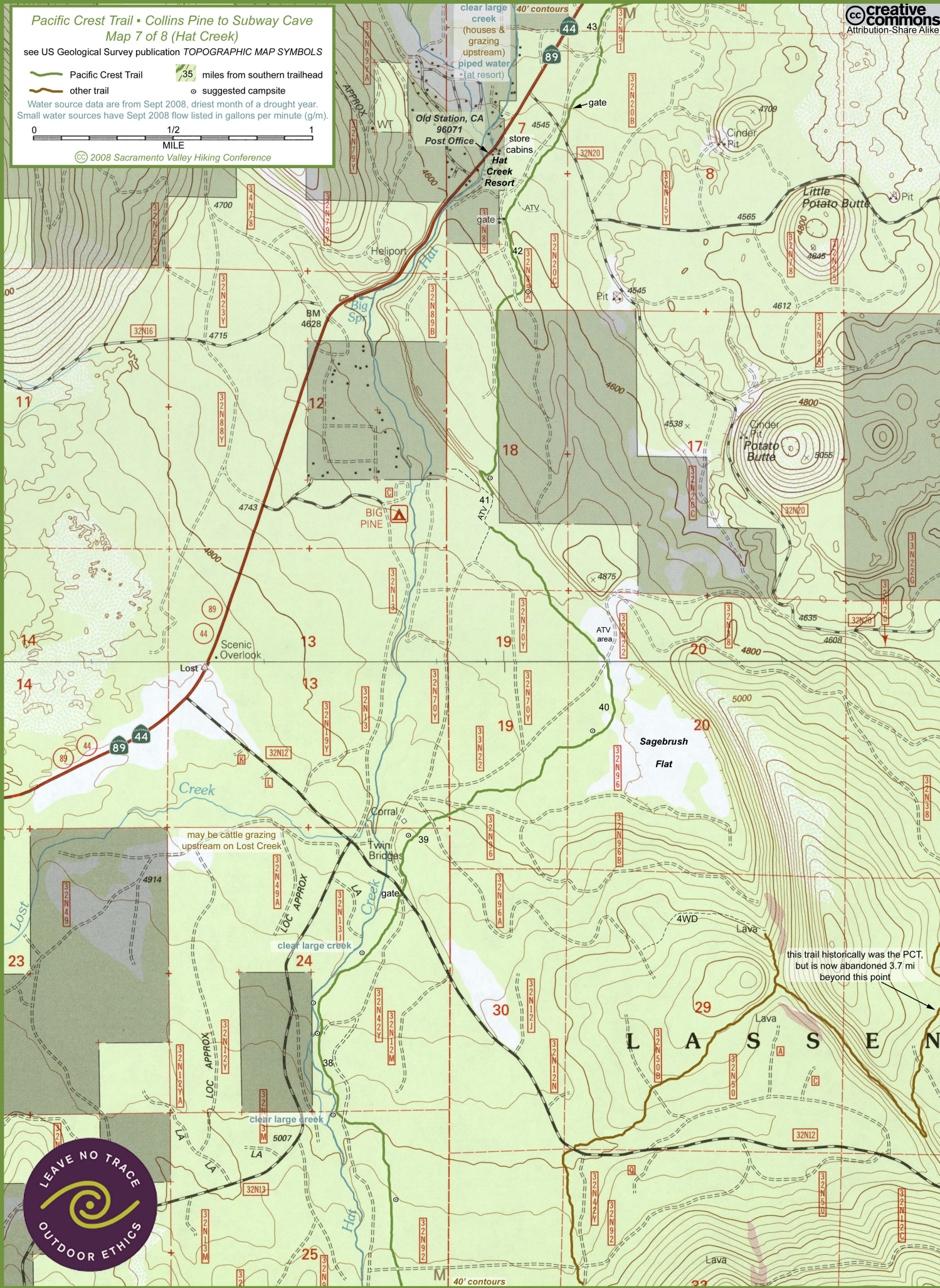
- Pacific Crest Trail
- other trail
- 35 miles from southern trailhead
- suggested campsite

Water source data are from Sept 2008, driest month of a drought year.
Small water sources have Sept 2008 flow listed in gallons per minute (g/m).

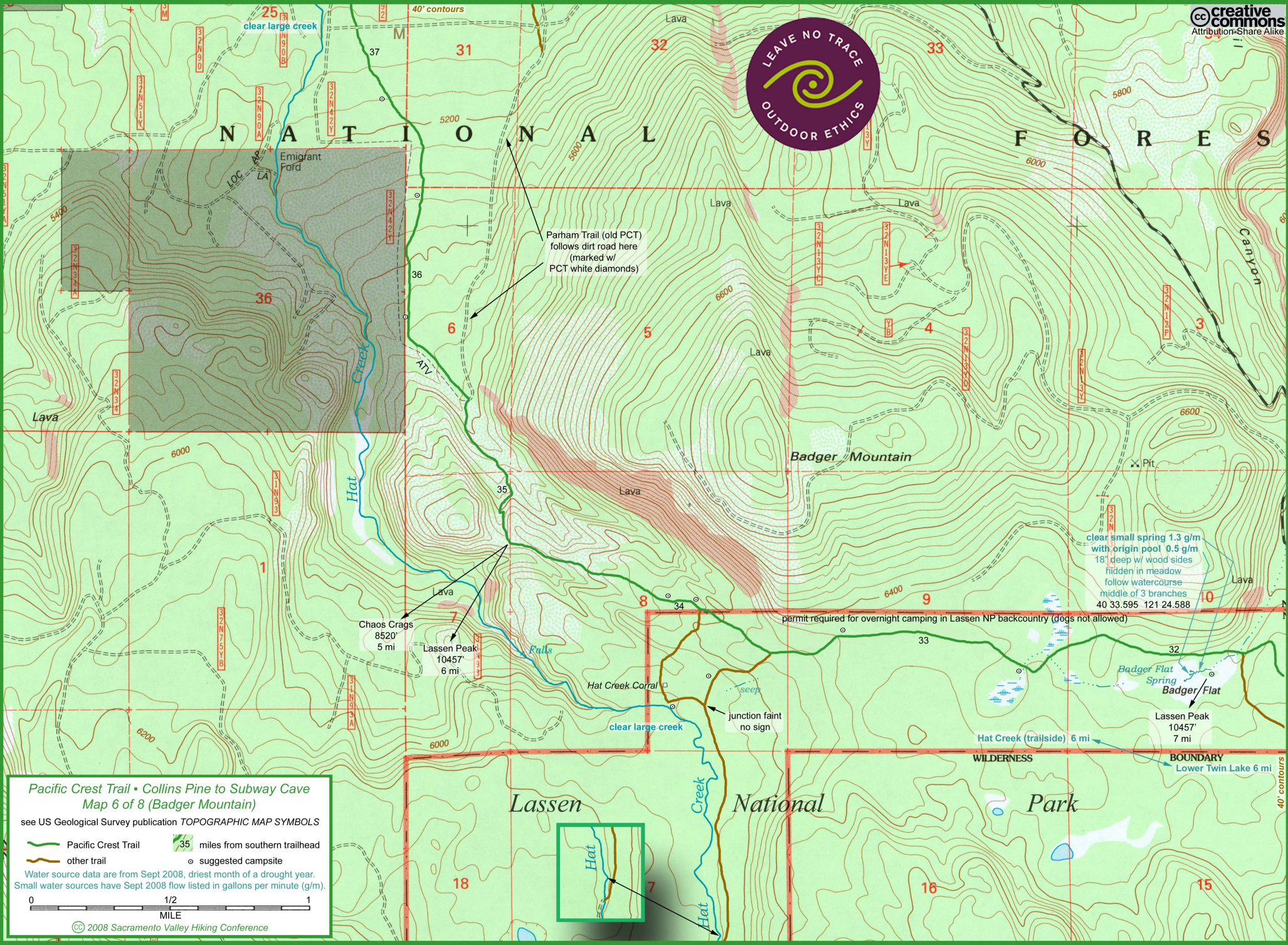


© 2008 Sacramento Valley Hiking Conference

CC creative commons
Attribution-Share Alike



this trail historically was the PCT,
but is now abandoned 3.7 mi
beyond this point

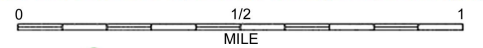


Pacific Crest Trail • Collins Pine to Subway Cave
Map 6 of 8 (Badger Mountain)

see US Geological Survey publication TOPOGRAPHIC MAP SYMBOLS

- Pacific Crest Trail
- other trail
- 35 miles from southern trailhead
- suggested campsite

Water source data are from Sept 2008, driest month of a drought year.
Small water sources have Sept 2008 flow listed in gallons per minute (g/m).



Parham Trail (old PCT)
follows dirt road here
(marked w/
PCT white diamonds)

Chaos Crags
8520'
5 mi

Lassen Peak
10457'
6 mi

clear small spring 1.3 g/m
with origin pool 0.5 g/m
18" deep w/ wood sides
hidden in meadow
follow watercourse
middle of 3 branches
40 33.595 121 24.588

permit required for overnight camping in Lassen NP backcountry (dogs not allowed)

junction faint
no sign

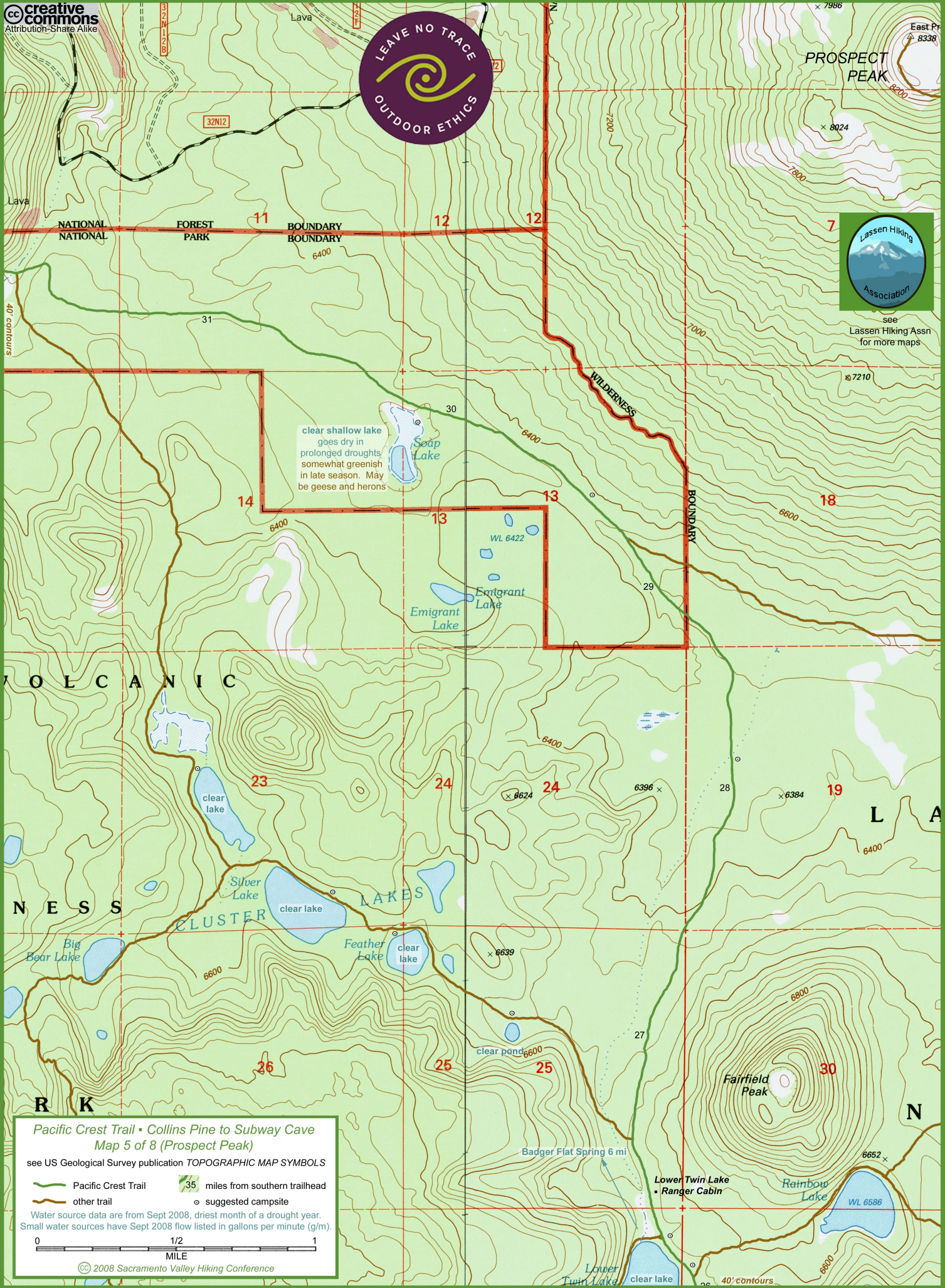
Hat Creek (trailside) 6 mi

Lassen Peak
10457'
7 mi

BOUNDARY
Lower Twin Lake 6 mi



see Lassen Hiking Assn for more maps



clear shallow lake goes dry in prolonged droughts somewhat greenish in late season. May be geese and herons

Soap Lake

Emigrant Lake

Silver Lake

Feather Lake

Fairfield Peak

Rainbow Lake

Lower Twin Lake

Ranger Cabin

Badger Flat Spring 6 mi

Pacific Crest Trail • Collins Pine to Subway Cave Map 5 of 8 (Prospect Peak)

see US Geological Survey publication TOPOGRAPHIC MAP SYMBOLS

- Pacific Crest Trail
- other trail
- suggested campsite

Water source data are from Sept 2008, driest month of a drought year. Small water sources have Sept 2008 flow listed in gallons per minute (g/m).

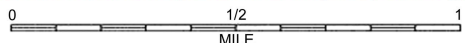


Pacific Crest Trail • Collins Pine to Subway Cave
Map 4 of 8 (Grassy Swale)

see US Geological Survey publication TOPOGRAPHIC MAP SYMBOLS

- Pacific Crest Trail
- other trail
- 35 miles from southern trailhead
- suggested campsite

Water source data are from Sept 2008, driest month of a drought year.
Small water sources have Sept 2008 flow listed in gallons per minute (g/m).



© 2008 Sacramento Valley Hiking Conference

creative commons
Attribution-Share Alike

BOUNDARY

no camping along this trail

no camping within 1/4 miles of Echo Lake



see
Lassen Hiking Assn
for more maps

Lassen

National

Park

PCT's closest
point to Lassen Peak
(5.7 mi)

Grassy Swale Falls
clear large creek
ford (tricky downed tree 2008; seasonal bridge some years)

Corral Meadow

bog bridge

Flatiron

Ridge

SHASTA CO
PLUMAS CO

SHASTA CO
PLUMAS CO

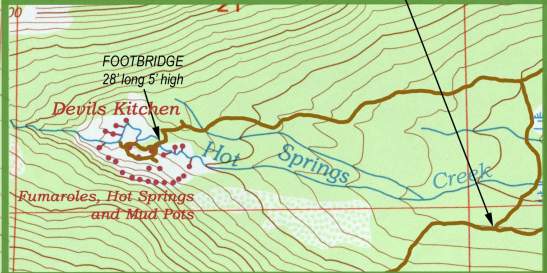
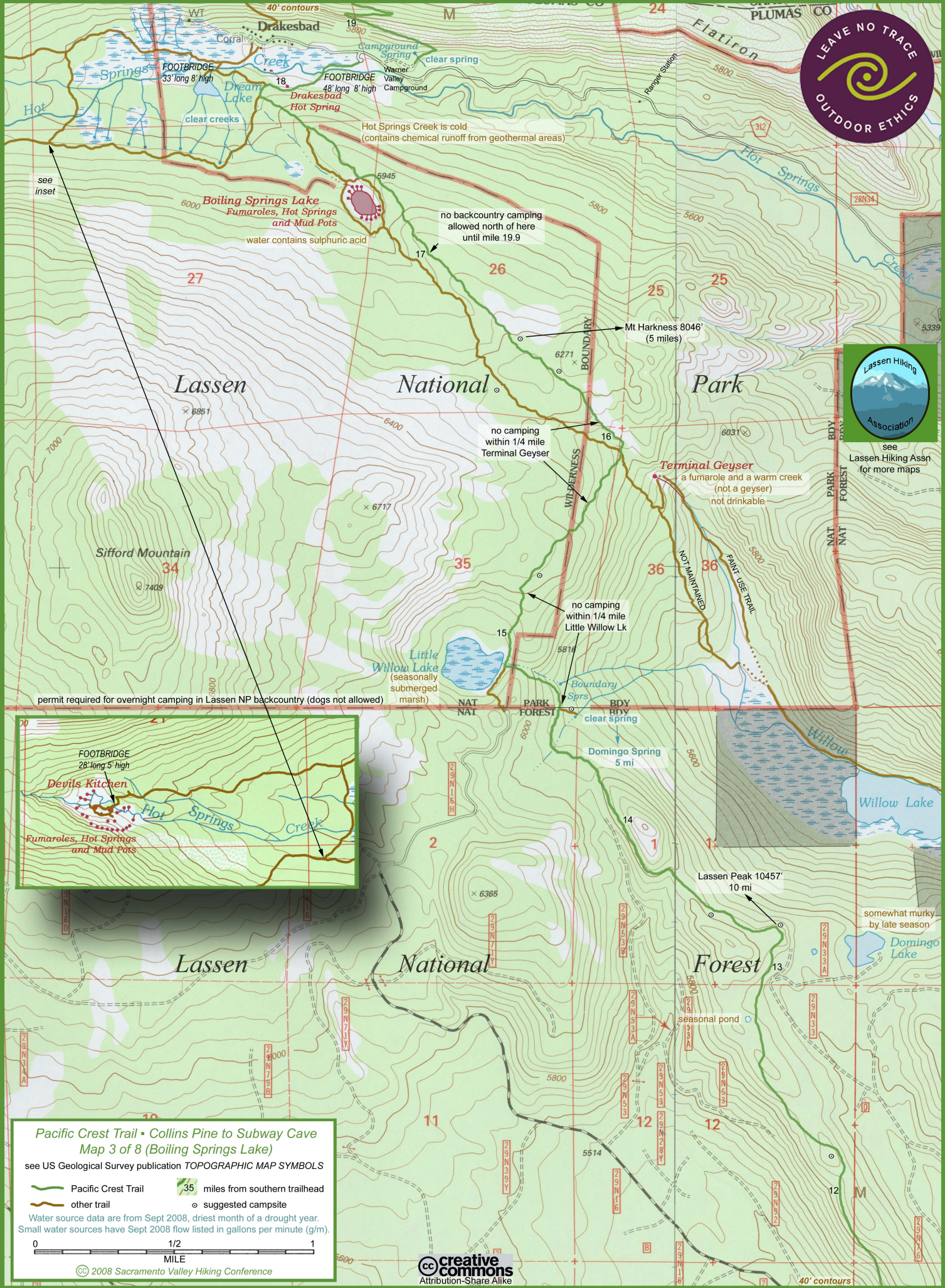
Drakesbad



dangerous early season ford
(tricky downed tree in 2007)



see Lassen Hiking Assn for more maps



Pacific Crest Trail • Collins Pine to Subway Cave Map 3 of 8 (Boiling Springs Lake)

see US Geological Survey publication TOPOGRAPHIC MAP SYMBOLS

- Pacific Crest Trail
- other trail
- 35 miles from southern trailhead
- suggested campsite

Water source data are from Sept 2008, driest month of a drought year.
Small water sources have Sept 2008 flow listed in gallons per minute (g/m).



© 2008 Sacramento Valley Hiking Conference

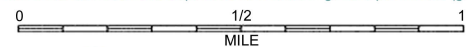


Pacific Crest Trail • Collins Pine to Subway Cave
Map 2 of 8 (North Fork Feather River)

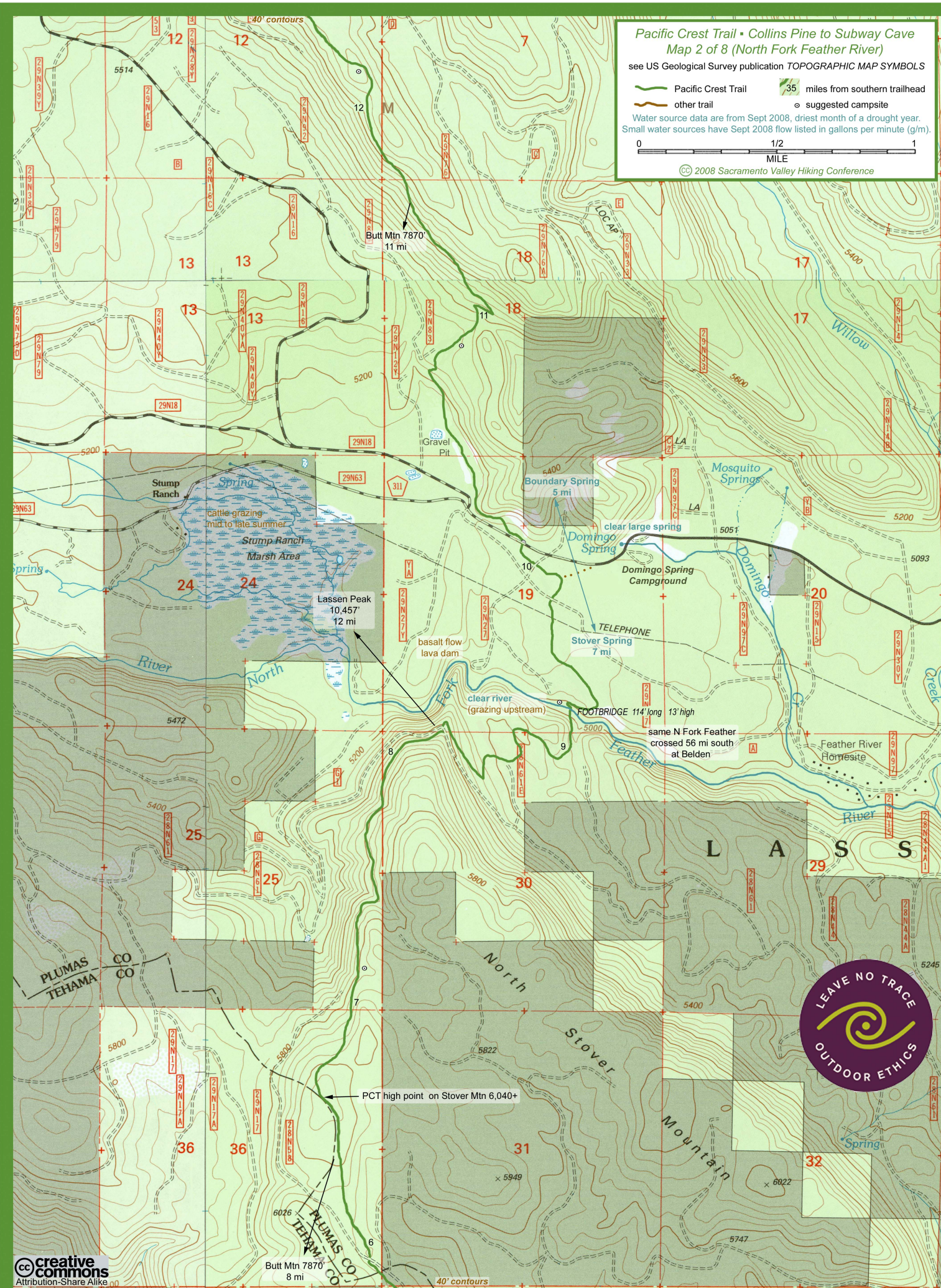
see US Geological Survey publication TOPOGRAPHIC MAP SYMBOLS

- Pacific Crest Trail
- other trail
- 35 miles from southern trailhead
- suggested campsite

Water source data are from Sept 2008, driest month of a drought year.
Small water sources have Sept 2008 flow listed in gallons per minute (g/m).



© 2008 Sacramento Valley Hiking Conference



Pacific Crest Trail • Collins Pine to Subway Cave
Map 1 of 8 (Stover Spring)

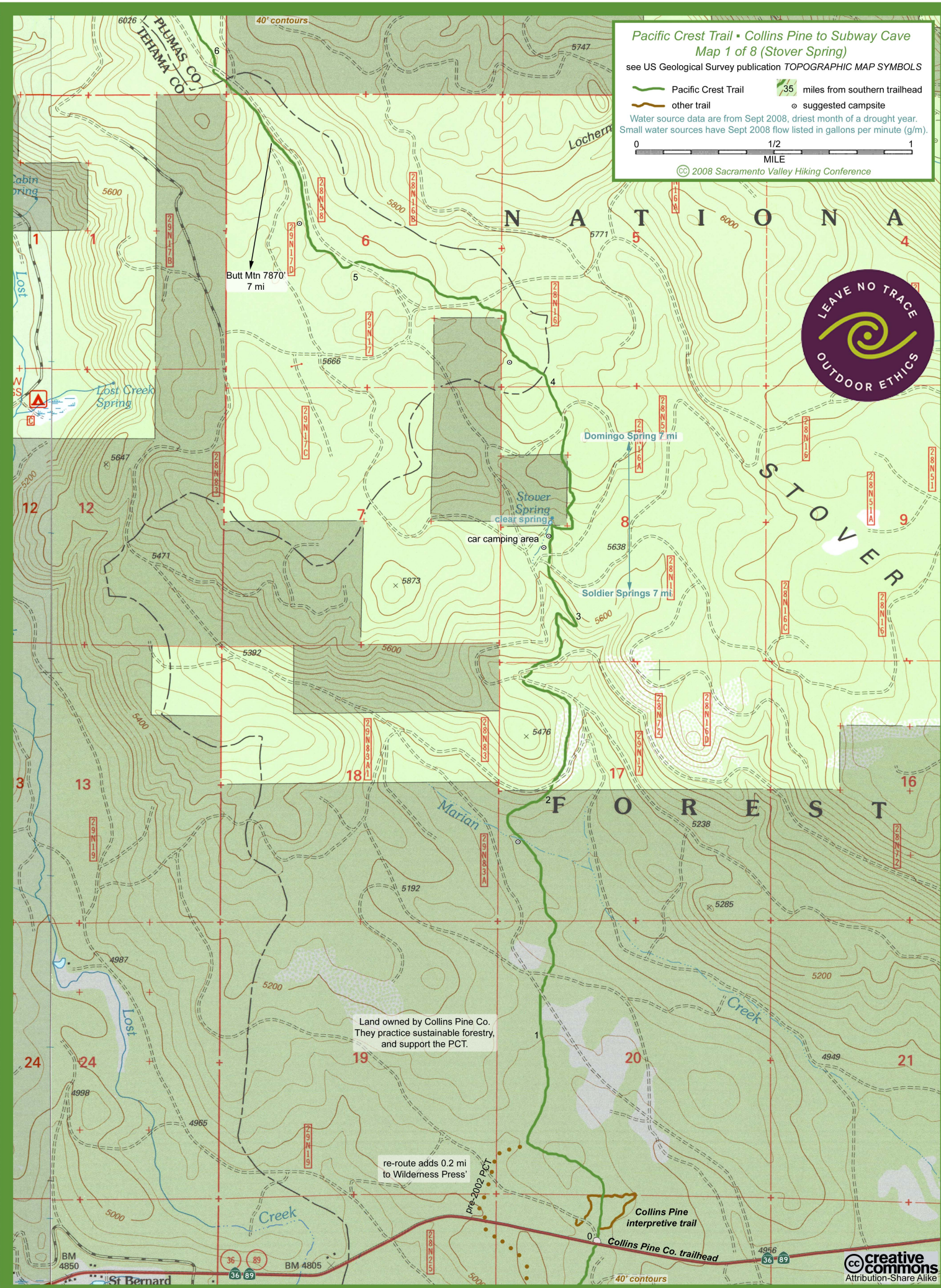
see US Geological Survey publication TOPOGRAPHIC MAP SYMBOLS

- Pacific Crest Trail
- other trail
- 35 miles from southern trailhead
- suggested campsite

Water source data are from Sept 2008, driest month of a drought year.
Small water sources have Sept 2008 flow listed in gallons per minute (g/m).



© 2008 Sacramento Valley Hiking Conference



Land owned by Collins Pine Co.
They practice sustainable forestry,
and support the PCT.

re-route adds 0.2 mi
to Wilderness Press

Collins Pine
interpretive trail

Collins Pine Co. trailhead

Lassen Volcanic National Park

- paved highway
- paved secondary road
- gravel road
- dirt road
- Pacific Crest Trail

Drakesbad (guest ranch)

northbound trail starts in campground (no parking)

entrance station (fee)



trailhead
(gravel parking lot)



Domingo Spring

2.6 mi

5.4 mi

0.6 mi

2.6 mi

4.9 mi

5.3 mi



Collins Pine Co. trailhead

Chester

52 mi
miles between dots

Pacific Crest Trail
Collins Pine trailhead